

„PASSIONARITY” AS A GENETIC ENGINEERING OF NATURE, RESPONSIBLE FOR HUMAN EVOLUTION

**Stepan A. Yurchenko, Daria S. Yurchenko
LLC „TEKHOSNASTKA-RTD”, Petropavlovka, Russian
Federation
Russian State University for the Humanities, Moscow, Russian
Federation**

Abstract: *Genetic engineering is a relatively young science whose foundations were laid in the second half of the twentieth century. To date, genetic engineering is on the path of changing the body by introducing into the cell new, specific, genes that change the human genotype, which is actually an attempt to take on the function of the creator. But science so far does not have an exact idea of the mechanism of human natural evolution. The statement of more than five hundred well-known American scientists from various fields of science, about distrust of Darwin's theory, indicates that modern science does not agree with the proposed mechanism of evolution. Therefore, finding the mechanism of evolution is one of the interesting and important tasks facing science. The paper analyzes the possible evolutionary mechanism of a person on the basis of the concept of "passionarity", that is, the change of a person under the influence of the "external" energy proposed in the theory of L.N. Gumilyov. The study found that L.N. Gumilyov did not analyze the changes in individual people, including the biblical prophets, who "received" new abilities in the mountainous areas, and therefore he did not consider the energy of the earth as the main source of "passionarity". Repeated analysis of this hypothesis together with the hypothesis about the energy of the Earth's core entering the earth's surface, along waveguides and faults, shows that there is a high probability of the influence of Earth's energy on the "drive lines" corresponding to the places of development of ancient states. An analysis of the construction sites of religious objects showed that these objects are natural energy accumulators and their location is not accidental. The building material, the shape of the structure contributes to the accumulation of energy. Subsequent analysis revealed that these energy objects have properties to influence the human brain. A change in brain activity leads to a change in the "passionarity" of a person, a group of people, that is, a defining surrounding reality changes the human consciousness, which accordingly leads to a change in the goals and desires of the person.*

Keywords: earth energy, crystal structure of the earth's core, energy objects of religious purposes, evolution, satellite archeology; mutation.

Comparatively recently, in the 50s of the twentieth century, important discoveries and inventions were made that made it possible to begin to decipher the information "recorded" in the genes. By the beginning of the 21st century, science has advanced so much in research that the President of Russia V.V. Putin at the 19th World Festival of Youth and Students, in Sochi, said that the time was near for the creation of genetically modified people – writers, mathematicians, including soldiers. This is the next stage in the development of technology, but the

application of these technologies can be worse than atomic weapons. In fact, humanity broke into the field of constructing its own kind, but did not fully understand the mechanism of the natural evolution of nature.

In nature, the change of genes in living cells, that is, mutation, occurs under the action of mutagens – chemical poisons, radiation, and other external stimuli. It is not currently possible to control or direct these mutations. As a result, science has taken the path of introducing new, specific genes into a cell that change a person. It is not clear whether such a transformation of man enters into the original plan of genetic change laid down by “nature”, but it is obvious that many will want to improve their genetic line and as a result enter the elite of the new society. Ultimately, this experiment can lead to the division of society into two groups, where a small part will differ significantly from the majority and all knowledge and technologies will be concentrated in the hands of this genetically modified group of “people”. All this may lead to an attempt to build a society under the control of genetically modified "people", which will not allow the implementation of the natural program of evolution laid down by nature. And in fact, it can lead to the “nulling” of the entire civilization on the planet as it happened not once in the history of the Earth.

Modern evolutionary theories

Currently, there are many evolutionary theories of human development, so the neurophysiologist and Nobel Prize winner Eric Candelo in the article “Does the Internet Make You Dumber?” Indicates that the Internet makes people more stupid due to the fact that surfing the network does not allow focus on one thing and this leads to the inability to build strong neural connections. Professor Huba Zvart in his report “The Fate of the Human Subject in the Age of Information Technology of Big Data” presented at the European Council on Bioethics indicates that due to the rapidly expanding number of implants in both the body and the human brain, external expansion is transformed into technology inside a human being. At the same time there is a big threat of dependence on external control. Currently, evolutionary theories consider almost all possible directions of human development dependent on new technologies, but biology has so far not found the exact process of natural evolution. To build any "building" is necessary on the foundation, and if there is no exact process describing the creation of the foundation (natural evolution), then the "building" will collapse. The theory of human

evolution, proposed by Charles Darwin, is questionable. So more than 500 American scientists signed a document in which they expressed their skepticism about the Darwinian theory of evolution. “We doubt the theory of natural selection. We consider it our duty to ask the scientific community to conduct a series of additional, more in-depth studies of Darwin's theory”. It turns out that there is no understanding of the process of evolution.

An alternative theory of human development in the form of the development of civilizations was proposed by L.N. Gumilyov. He suggested that the change of man occurs under the action of some energy – “cosmic radiation” which periodically comes to earth from space. This change he called the drive. By the time of publication of the work of L.N. Gumilyov theory already existed VI. Vernadsky "Biosphere" and the Miller-Yuri experiment was conducted to test the possibility of synthesizing organic molecules from inorganic under the action of electrical discharges. Repeated analysis in 2008 showed that the experiment led to the formation of 22 amino acids. In fact, Gumilyov was not the first to suggest that it is energy that affects both the biosphere of the earth and the person who is part of this biosphere. Unfortunately, the assumption of L.N. Gumilyov about cosmic radiation is not confirmed by dendrochronological analysis. In this connection, most scientists are skeptical of this theory. But the analysis carried out by the authors in work¹ showed that it is possible to correlate the earth's core energy to the Earth's surface through waveguides with an increase in the electromagnetic field at a given location, and this type of energy cannot be tracked by the paleomagnetic method how this method is based on a change in the direction of the magnetic field associated with a change in the magnetic poles of the planet, which is not happening. Therefore, the authors suggested that given the fact that the position of the magnetic poles oscillates over time, the waveguides are also in motion. As a result, the energy emanating from the core of the Earth is constantly changing its position on the surface of the Earth, see Fig. 1.

¹ N.Yu. Nikolaev, S.A. Yurchenko, “Cultural landscape and meanders: historical parallels, topography features, hidden semantics. Historical, philosophical, political and legal sciences, cultural studies and art history”, in *Questions of Theory and Practice*, 2017, vol. 83, no. 9, p. 131-135.

twentieth century² and changes in the psychological state of the experimental were noted. Therefore, it is possible to assume that an increased electromagnetic field affects the activity of the brain, and that this information was known in antiquity to a narrow circle of people – to the priests.

Patterns of choice of the place for construction the objects with religious purpose

To create an increased “potential” of the electromagnetic field, the priests needed to create devices or structures that could store energy. Therefore, we will analyze the structures of ancient civilizations with signs of accumulation of natural energy. In 2017, scientists of the St. Petersburg University IMTO and the Laser Center of Hanover developed a mathematical model³, which shows that the pyramid of Cheops is able to concentrate electromagnetic energy in itself due to its shape, size and material. In the paper⁴, using satellite archeology, the authors found a new pattern for choosing the place of construction of religious objects (C.R.O.) in Russia, and the line connecting all these objects can be correlated with one of the drive line of the drive found by L.N. Gumilyov in his work⁵. Subsequent analysis in research⁶ showed that the patterns of location of C.R.O. used in the construction of similar religious buildings around the globe in all the ancient civilizations of Eurasia, the Middle East and South

² Yu.A. Holodov, *Brain in electromagnetic fields*, Nauka, Moscow, 1982.

³ M. Balezin, K.V. Baryshnikova, P. Kapitanova, A.B. Evlyukhin, “Electromagnetic properties of the great pyramid: first multipole resonances and energy concentration”, in *Journal of Applied Physics*, 2018, no. 124, 034903.

⁴ S.P. Ramazanov, N.Yu. Nikolaev, S.A. Yurchenko, “The river landscape and the topography of monuments in archaeological cultures of the Volga region and the South Urals during the late Eneolithic and Bronze Age. Historical, philosophical, political and legal sciences, cultural studies and art history”, in *Questions of Theory and Practice*, 2017, vol. 76, no. 2, p. 166-170.

⁵ L.N. Gumilyov, *End and start again*, Ardis, Moscow, 2010.

⁶ N.Yu. Nikolaev, S.A. Yurchenko, “Cultural landscape and meanders: historical parallels, topography features, hidden semantics. Historical, philosophical, political and legal sciences, cultural studies and art history”, in *Questions of Theory and Practice*, 2017, vol. 83, no. 9, p. 131-135.

America⁷. In the work⁸, the author, considering the construction site in the bend (meander) of the river, answers the question why this particular place was chosen for the construction of energy objects of religious purposes (E.O.K.A.). The theoretical analysis showed that in this place there is a concentration of the natural energy of the flowing river, see Fig. 3.

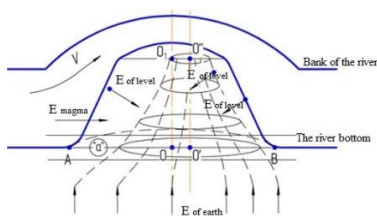


Figure 3: Diagram of the energy concentration of the current river in the bend array

It turns out that the priests of ancient civilizations knew about such places of concentration of natural energy and used every opportunity to build the maximum quantity of E.O.C.A., which is confirmed by the work⁹ where the author showed that with a complex turn current "of natural energy, see Fig. 4, the priests built two E.O.K.A. Type Ekur in the meander of the Euphrates River.

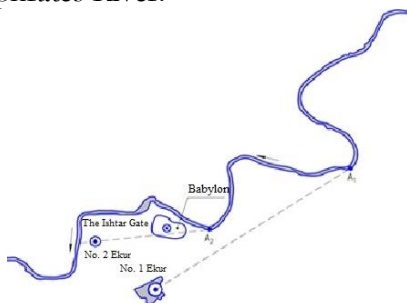


Figure 4: Barsippa, the meander of the Euphrates river has two lines of current of natural energy on each of which is built by Ekur

⁷ A. Sailaukyzy, G. Yertassova, K. Sak, N. Kurman, "Social aspects of religious matters in the comparative analysis of the historical and contemporary feature materials of Kazakhstan", in *Utopia y Praxis Latinoamericana*, 2018, vol. 23, no. 82, p. 52-62.

⁸ S.A. Yurchenko, "Energy nature of river bends and problems of topography of religious buildings. Historical, philosophical, political and legal sciences, cultural studies and art history", *Questions of Theory and Practice*, 2017, vol. 86, no. 12, p. 212-217.

⁹ S.A. Yurchenko, "Knowledge of ancient civilizations on the accumulation of natural energy in places of construction of religious buildings", *Manuscript*, 2018, vol. 91, no. 5, p. 61-64.

And to create Ekur No. 1, the priests specially executed the “artifact” lake. The lake is a hub of current line energy (from point A1) at the construction site of E.O.K.A.

Considering the materials used by the priests for construction, it can be noted that mica (muscovite) was used to create a perfect battery – the Pyramid of the Sun in Teotihuacan, Mexico, which was delivered almost three thousand kilometers to the site. The stones of Stonehenge were delivered a few hundred kilometers from Pembrokeshire County in the south-west of Wells. The authors¹⁰ of Stonehenge's research came to this conclusion based on the similarity of Stonehenge stone minerals and quarry minerals. But not only in England and South America special materials were used in the construction of religious buildings. The study of megaliths on the territory of the South of Russia revealed that the majority of C.R.O. consists of rocks with a high quartz content¹¹.

It is known that quartz has a piezoelectric effect, which affects the electromagnetic field. As a result of experiments¹², weak, but quite detectable electromagnetic and acoustic radiation was identified, which characterizes megaliths as an energy structure. It is possible that if the megalithic structures were restored in their original form, the scientists would have revealed a stronger disturbance from this structure on the electromagnetic field and it would be possible to analyze the influence of this E.O.K.A. on the human brain. But there are still scientific studies¹³ that show that megaliths in northern Russia affect both the human body and the psyche. Studies¹⁴ conducted by Dr. Jan Cook from the University of California at Hypogeum showed that at a frequency of 110 Hz, which correspond to the resonant frequency shifted, which led to a temporary

¹⁰ *Quarrying of Stonehenge 'bluestones' dated to 3000 BC. 2019.* Available at: https://www.eurekalert.org/pub_releases/2019-02/ucl-qos021519.php

¹¹ A.Yu. Byakov, M.S. Pyatunin, A.A. Byakov, “Geophysical studies of dolmens of the Caucasus. Questions processing and interpretation of geophysical observations”, in *Proceedings of the conference dedicated to the 100th anniversary of Alexander Kirillovich Malovichko*, Unified Geophysical Service of the Russian Academy of Sciences, Obninsk, 2012.

¹² S.A. Gerasimov, V.S. Lysenko, I.P. Ogaj, “About electromagnetic and acoustic radiation of megaliths”, *Science Symbol*, 2016, vol. 22, no. 10-3, p. 194-200.

¹³ G.N. Dul'nev, A.G. Rezunkov, O.P. Rezunkova, N.A. Zagustina, S.V. Golubev, “Biophysical and energy-information studies of the effect on humans of megalithic structures”, in *Scientific and Technical Journal of Information Technologies, Mechanics and Optics*, 2007, no. 35, p. 83-88.

¹⁴ D. Mandal, *Hypogeum of Hal Saflieni: the grand underground 'temple' with acoustic effects. realm of history of September 13, 2015.* Available at: <https://www.realmofhistory.com/2015/09/13/hypogeum-of-hal-saflieni-the-grand-underground-temple-with-acoustic-effects/>

switch from left to right-sided domination of the brain, that is, reality. Hypogeum, due to its geometric shapes and sizes, is capable of tuning sound waves to the resonant frequency of 110 Hz and, therefore, they are also an energy object.

The above analysis of the pattern of the construction site of E.O.K.A. and their design features, as well as the materials used in construction, indicate that the above-stated assumption that the priestly class knew where it was necessary to build an E.O.K.A., and also knew about the influence of the forms and materials necessary for this structure is true. Thus it is possible to assume that many E.O.K.A. They are used to influence electromagnetic and acoustic field on human brain activity. This confirms our assumption that this effect was known to the priests.

In fact, it turns out the logical chain of the sequence of actions of the priests – finding the place of concentration of natural energy, building a cult building in a given place, concentration (accumulation) of energy to a certain level, impact on the human brain. It remains only to find out exactly what this impact is and whether there are examples of this impact in history.

Examples of the impact of E.O.K.A. on people

Important information was found in the Bible. It was not once proved by scientists that this book contains reliable data. So archaeologists found Sodom and Gomorrah based on the biblical description of the location of these cities. Mathematicians were able to simulate the Moses version of the transition of the Red Sea with an east wind. With the help of satellite archeology, it was possible to find the city of Iram, which was mentioned only in the Quran. Therefore, let us assume the theoretical possibility that Moses on Mount Horeb, of the Sinai Peninsula, gained the ability to perform miracles when exposed to radiated electromagnetic energy from a mountain, which probably led to activation of all parts of the cerebral cortex or to setting up all axon connections between the left and right hemispheres of the brain. If our assumption is correct, then the place of energy release must correspond to the parameters of energy collection and accumulation at the focal point. Therefore, we consider the location of the monastery of St. Catherine, which was built on the site of the "illumination" of Moses, using satellite data, see figure 5.

From the satellite image it can be seen that the location of the monastery corresponds to the focal point from the oval of the tip of the Sinai Peninsula, washed by the Red Sea. From the Bible it is known that

bend. In the work¹⁶ it is indicated that for more than 200 years more than 12 old men have been registered in the Optina Hermitage, possessing the powers of “insight” and healing. All of them prayed in the Predtechensky monastery where access is now limited. Thus, the constant acquisition by monks of certain abilities is actually not a random process, but has a certain regularity that corresponds to the time of energy accumulation at the focal point of the meander of the Zhizdra river. Thus, it can be considered that, falling under the action of radiation, a change in brain activity occurs, which leads to a "mutation" and the acquisition of new abilities. This “mutation” as a process coincides with the found “passionarity” of L.N. Gumilyov – a person's change under the action of energy.

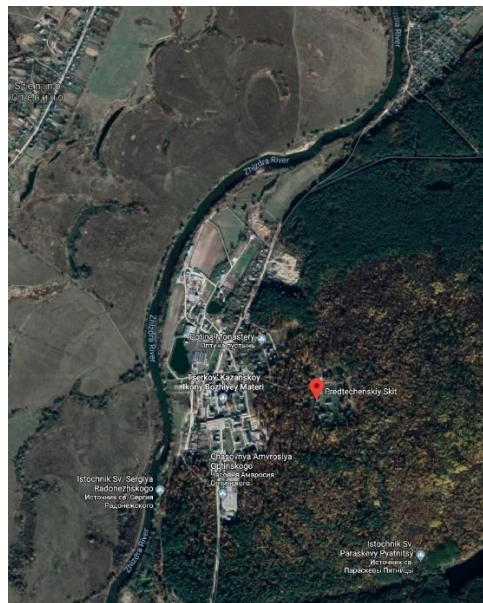


Figure 6: Predtechenskiy Skit is located in the bend of the Zhizdra river

It turns out that the "mutation" of a person can occur for a long time with a "weak" energy source and instantly under the influence of a "strong" energy release. It is possible to assume that a “mutation” – human evolution occurs as follows – under the action of electromagnetic radiation, from the earth, the axons in the human brain are tuned to pass electrical impulses through them only in one direction, which depends on

¹⁶ I.M. Koncevich, *Optina Pustyn and its time*, Biblioteka Frontistes, Saint Petersburg, 2005.

the effects of electromagnetic radiation, which in each specific location has its own direction of rotation. Thus, there will be no counter impulses from different hemispheres and the axon will not be blocked, which will allow for the synthesis of information and decision-making more quickly, more detailed and meaningful.

Analysis of the theory of "passionarity" showed that Gumilyov did not conduct a more detailed analysis of changes in individuals, including the biblical prophets, who "received" new abilities in the mountainous area and therefore did not take into consideration the energy of the earth as the main source influencing the "passionarity" of civilizations, and took some "cosmic" radiation which from time to time comes to Earth, which did not confirm dendrochronological analysis, and thus made an error in the definition of energy. An additional analysis of the definition of the mechanism of "passionarity" based on the hypothesis of the crystalline structure of the Earth's core showed that there is a high probability that the incoming energy from the Earth's core to its surface, along waveguides and faults, corresponds to the "passionarity" lines of L.N. Gumilyov which correspond to the places of development of ancient states.

The found patterns of places of construction of objects of religious purposes showed that these objects are accumulators of natural energy and their location is not accidental. The material used for the construction, as well as the shape of the structure has certain properties for energy storage. Further analysis revealed that these energy objects have properties to affect the human brain. The degree of human exposure is determined by the power of the emitted energy, which depends on the amount of stored energy in the natural material of the mountains or energy objects of religious purpose built in the meanders of rivers or seas. The found information about the change of people, as well as the constancy of this process, suggests that the process of "mutation" of a person under the influence of natural energy is a natural mechanism of "evolution" of the homo-sapiens species. The mechanism of the electromagnetic field on the human brain leads to a change in brain activity and to a change in human consciousness, which determines the surrounding reality, leads to a change in the goals and desires of a person, which corresponds to the concept of "increasing passionarity" by L.N. Gumilyov. Thus, it is possible to consider that "passionarity" as a change in human consciousness corresponds to the genetic mechanism of evolution by the inherent nature.